



avtek

product catalogue

about Avtek

First Avtek products hit the market in 2006 in Poland.

From the early beginning the brand focuses on Audio-Visual equipment for conference and education markets as well as for professional presenters.

Hence our motto: Present, Teach, Inspire...

The Avtek brand name is abbreviation of Audio Visual Technologies.

our promise

It has always been our goal to provide highest value for customer, keeping in mind that budgets are under growing pressure.

We aim to guarantee the highest quality/price ratio in the industry.

All products are secured by 2 years European Warranty.

our gratitude

Our strategy received very good reception among our customers.

Over 30.000 customers decided to trust our claim during first 4 years of our presence in the market.

We would like to express our deepest gratitude to all of our clients.

Your Avtek Team

contents

contents

interactive boards | 3

projection screens | 7

mounting systems | 15

accessories | 19





avtek

avtek

avtek

avtek

interactive boards

interactive

boards



TT-BOARD 1086

infrared touch technology

- working area diagonal 78"
- infrared positioning technology provides ultra-fast response
- dry erasable surface
- touch operation with finger or any passive pointer
- hotkeys on both sides for direct access to frequently used functions
- RM Easiteach interactive software included

detailed specification on page 4

RM easiteach
NEXT GENERATION
software included with all Avtek boards

hotkeys



new document



add new page



next page



previous page



select tool



black pen



eraser



undo



text tool



handwriting recognition tool



shape recognition tool



show keyboard



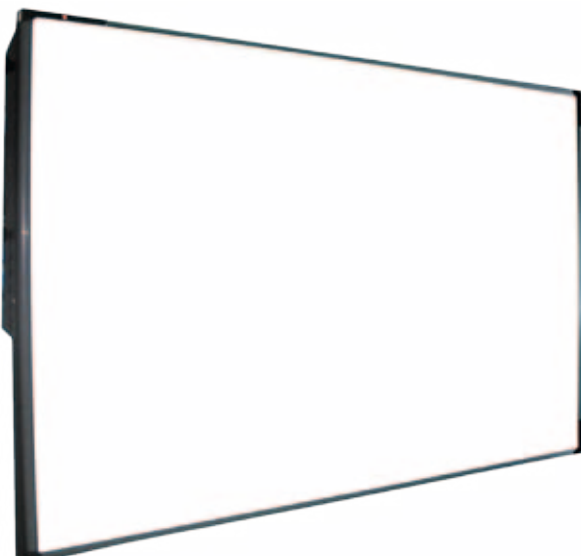
import to media bank dialog



saveAs dialog



calibration



TT-BOARD 2080

optical touch technology

- working area diagonal 77"
- optical positioning technology provides high resolution and precision
- dry erasable surface
- touch operation with finger or any passive pointer
- simple design for easy integration in classroom environment
- RM Easiteach interactive software included

detailed specification on page 4

RM easiteach
NEXT GENERATION
software included with all Avtek boards

interactive boards



	TT-BOARD 1086	TT-Board 2080
board diagonal	86"	80"
working area diagonal	78"	77"
technology	infrared	optical
surface	dry erasable, optimized for projection independent from positioning technology	
writing method	pen, wand or finger	pen, wand or finger
aspect ratio	4:3	4:3
resolution	4096 x 4096	32768 x 32768
accuracy	3 mm	4 mm
cursor speed	120" / sec	60 points / sec
response speed	first touch: 25 ms, continuous: 8 ms	< 16 ms
connection	usb	usb
hotkeys	both sides of the board	-
board dimensions	1818 x 1325 mm	1628 x 1229 mm
working area dimensions	1649 x 1137 mm	1586 x 1166 mm
packaging dimensions	2040 x 1400 x 120 mm	1785 x 1380 x 80 mm
board weight	26 kg	15 kg
weight with packaging	33 kg	24 kg
operating system	windows xp/vista/7 32/64 bit, mac os**	windows xp/vista/7 32/64 bit, mac os, linux*
power supply	usb	usb
accessories	usb cable, pointer, wall mounting set, manual	usb cable, pointer, wall mounting set, manual
optional accessories	mobile stand, regulated wall bracket	mobile stand, regulated wall bracket
software language **	uk english, us english, arabic, mandarin, italian, french, german, spanish, catalan, galician, latin american, dutch, polish, basque, brazilian portuguese, malaysian, japanese, korean, czech, swedish, greek, russian, bulgarian, traditional chinese, hungarian	
examples of software functions **	multi-touch support on windows 7 widget bank a range of sample activities that comes as standard text-to-speech voices from acapela included as standard play mode - allows easy interaction with objects and flash-based content various editing tools such as effects or actions handwriting recognition and shape recognition recording actions on screen and exporting as a video	
warranty	2 years	2 years
product code	1TV001	1TV002

* applicable only for driver

** applicable for RM Easiteach software included with all Avtek Boards

interactive

boards

RM Easiteach

RM easiteach™
NEXT GENERATION



- RM Easiteach Next Generation is highly recognized, industry-standard teaching software for interactive whiteboards
- enables users to create interesting, engaging lessons based on a wide range of content
- users can create personalized lessons from scratch as well as adapt included materials to their needs
- wide range of subjects for any educational needs regardless of student age and ability
- possibility to include animation, video, sound, text and Flash files on one page enables teachers and students to create advanced activities
- easily accessible toolbars and widgets also allow users to work quickly and efficiently in creative activities
- Easiteach is an ongoing development and will be enhanced with a range of new features over time

RM Easiteach is free with every purchase of Avtek interactive board

key features

- multi-language
- searchable multimedia bank with over 4.500 resources
- multi-touch support on windows 7
- handwriting recognition
- shape recognition
- widget bank
- a range of sample activities that comes as standard including templates, diagrams, lesson aids and activities
- language tools e.g. cloze tool, punctuation removal, word wallet, read with me
- multi person multi touch support
- text-to-speech voices from acapela included as standard
- effects (blur, drop shadow, mosaic, monochrome, old movie, swirl, wave, ripple)
- play mode - allows easy interaction with objects and flash-based content
- show dimensions on shapes and lines, and angles on shapes
- voting hardware api - allows 3rd parties to create drivers for their voting hardware to work with etng voting widget
- x-ray vision (reveals objects stored on a hidden layer, like magic ink)
- grid generator - user can generate various grid types and sizes
- record my actions - records actions on screen and exports as a video



searchable multimedia bank with over 4.500 resources



a range of sample activities that comes as standard including templates, diagrams, lesson aids and activities



show dimensions on shapes, lines and angles on shapes

examples of widgets

	chart maker		protractor 360°		picture sudoku		compass
	clock		ruler		tangrams		domino pairs
	dice		word randomiser		matching pairs		picture painter
	equations maker		number randomiser		calliper		randomizer
	fractions		periodic table		voting		tell the time clock

subject to technical modifications and errors
the real product might slightly differ from the images



avtek

avtek

avtek

avtek

avtek

avtek

avtek

avtek

avtek

projection screens

avtek

avtek

avtek

avtek

avtek

avtek

avtek



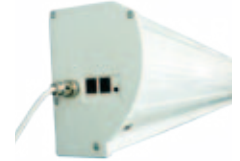
tension

electric screens

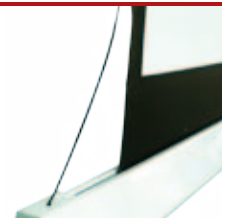
Business



DC 12V trigger input,
2 additional inputs eg. for manual control



side stretching cords



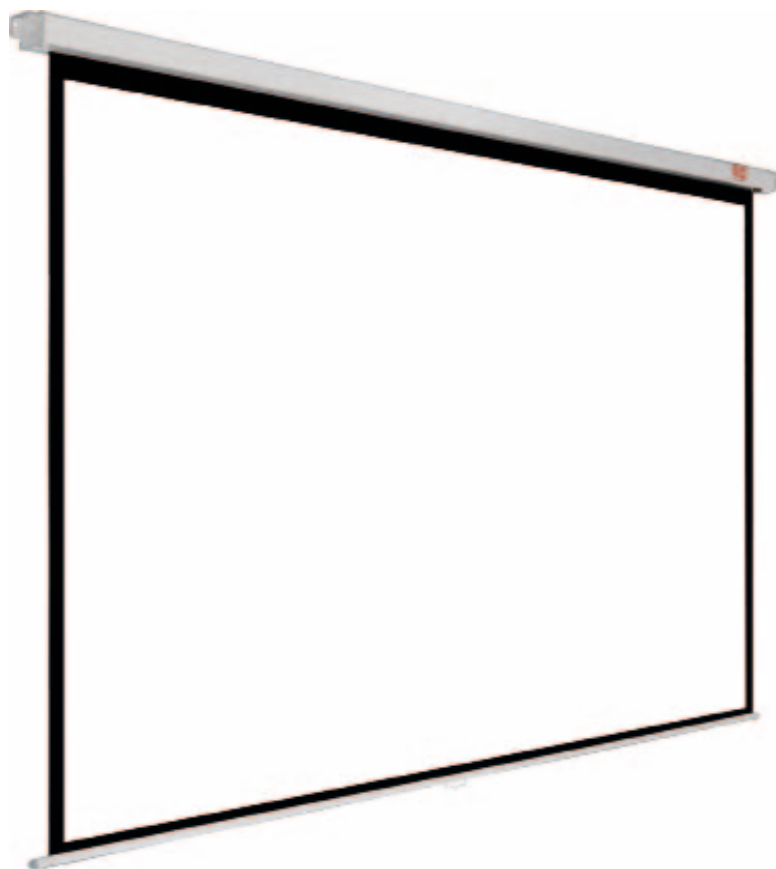
wireless remote (included)



- white aluminum casing (Tension type)
- side stretching cords for very smooth screen surface
- DC 12V trigger input
- 2 additional inputs eg. for additional control
- tubular engine (type 35-6/28) designed for intensive operation
- very convenient and unique mounting system
- ideal for ceiling or wall mounting
- aspect ratio 16:10 (WXGA)
- high quality Matt White projection surface
- gain factor 1.0
- black frames increase perceived contrast ratio
- black TOP - screen can be positioned at viewer's eye level
- Plug&Play technology - screen ready to go as soon as it is plugged in
- wireless operation (remote and receiver included)

	dimensions (cm)	viewing area (cm)	aspect ratio	projection surface	black frames (cm)	black top (cm)	black bottom (cm)	product code
Business Tension 200	199 x 199.6	195 x 121.8	16:10	Matt White	2	72.8	5	1EVE49
Business Tension 240	238.8 x 199.7	235 x 146.8	16:10	Matt White	1.9	47.9	5	1EVE50
Business Tension 270	268.8 x 219.8	260 x 162.5	16:10	Matt White	4.4	52.5	5	1EVE51
Business Tension 300	298.6 x 227.4	290 x 181.2	16:10	Matt White	4.3	41.2	5	1EVE52

Video | Business



unique square cross-section



ideal for in-ceiling installations



wireless remote (included)



- white metal Magnum casing - unique square cross-section
- flat bottom of the casing ideal for in-ceiling installations
- lower bar made of hard material protecting surface from creasing
- ideal for ceiling or wall mounting
- tubular engine (type 35-6/28) designed for intensive operation
- aspect ratio 4:3 (SVGA/XGA), 16:10 (WXGA)
- high quality Matt White projection surface
- gain factor 1.0
- black frames increase perceived contrast ratio
- black TOP - screen can be positioned at viewer's eye level
- Plug&Play technology - screen ready to go as soon as it is plugged in
- wired and wireless control "A-OK" model (remote and receiver included)

	dimensions (cm)	viewing area (cm)	aspect ratio	projection surface	black frames (cm)	black top (cm)	black bottom (cm)	product code
Video Electric 200	200 x 200	195 x 146	4:3	Matt White	2.5	49	5	1EVE11
Video Electric 240	240 x 200	235 x 176	4:3	Matt White	2.5	19	5	1EVE14
Video Electric 270	270 x 220	260 x 195	4:3	Matt White	5	20	5	1EVE15
Video Electric 300	300 x 227.5	290 x 217.5	4:3	Matt White	5	5	5	1EVE06
Business Electric 200	200 x 200	195 x 122	16:10	Matt White	2.5	73	5	1EVE45
Business Electric 240	240 x 200	235 x 147	16:10	Matt White	2.5	48	5	1EVE46
Business Electric 270	270 x 220	260 x 162.5	16:10	Matt White	5	52.5	5	1EVE47
Business Electric 300	300 x 227.5	290 x 181	16:10	Matt White	5	41.5	5	1EVE48

standard

electric screens

Wall |



wired control (included)



- white metal casing
- lower bar made of hard material protecting surface from creasing
- ideal for ceiling or wall mounting
- aspect ratio 4:3 (SVGA/XGA)
- high quality Matt White projection surface
- gain factor 1.0
- Plug&Play technology - screen ready to go as soon as it is plugged in
- smooth rolling up thanks to synchronous motor (type 60KTYZ-C)
- wired control included

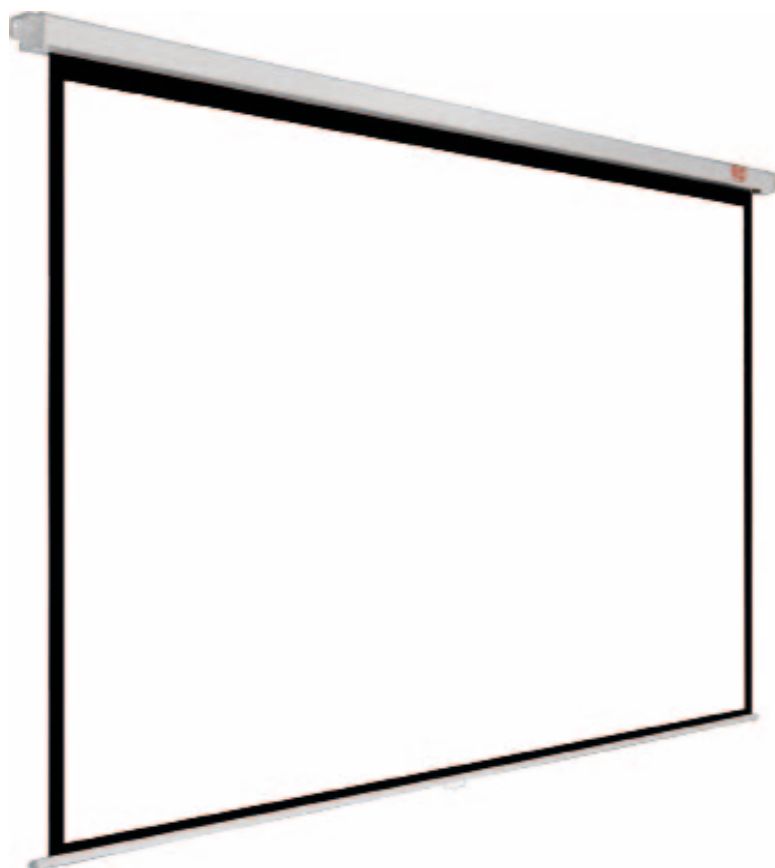
optional wireless module for Standard electric screens



- easy installation
- increasing presentations comfort
- remote and receiver included

	dimensions (cm)	viewing area (cm)	aspect ratio	projection surface	black frames (cm)	black top (cm)	black bottom (cm)	product code
Wall Electric 180	180 x 135	180 x 135	4:3	Matt White	-	-	-	1EVEE1
Wall Electric 200	200 x 150	200 x 150	4:3	Matt White	-	-	-	1EVEE2
Wall Electric 240	240 x 180	240 x 180	4:3	Matt White	-	-	-	1EVEE3

Video | Business



unique square cross-section



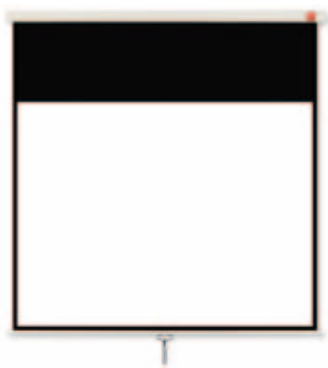
ideal for in-ceiling installations



- white metal Magnum casing - unique square cross-section
- flat bottom of the casing ideal for in-ceiling installations
- lower bar made of hard material protecting surface from creasing
- pull-up safety catch
- ideal for ceiling or wall mounting
- SRC System (Slow Return Control) for safe operation
- aspect ratio 4:3 (SVGA/XGA), 16:10 (WXGA)
- high quality Matt White projection surface
- gain factor 1.0
- black frames increase perceived contrast ratio
- black TOP - screen can be positioned at viewer's eye level



	dimensions (cm)	viewing area (cm)	aspect ratio	projection surface	black frames (cm)	black top (cm)	black bottom (cm)	product code
Video PRO 200	200 x 200	195 x 142.5	4:3	Matt White	5	52.5	5	1EVE54
Video PRO 240	240 x 200	230 x 172.5	4:3	Matt White	5	22.5	5	1EVE55
Business PRO 200	200 x 200	195 x 118.5	16:10	Matt White	5	76.5	5	1EVS59
Business PRO 240	240 x 200	230 x 143.5	16:10	Matt White	5	51.5	5	1EVS60



- white metal casing
- lower bar made of hard material protecting surface from creasing
- pull-up safety catch
- lower bar height adjustable
- ideal for ceiling or wall mounting
- aspect ratio 4:3 (SVGA/XGA), 16:10 (WXGA)
- high quality Matt White projection surface
- gain factor 1.0
- black frames increase perceived contrast ratio
- black TOP - screen can be positioned at viewer's eye level

	dimensions (cm)	viewing area (cm)	aspect ratio	projection surface	black frames (cm)	black top (cm)	black bottom (cm)	product code
Video 175	175 x 175	170 x 127.5	4:3	Matt White	2.5	44.5	3	1EVS23
Video 200	200 x 200	195 x 146.5	4:3	Matt White	2.5	49.5	4	1EVS24
Video 240	240 x 200	230 x 172.5	4:3	Matt White	5	23.5	4	1EVS25
Video 280	280 x 212.5	270 x 202.5	4:3	Matt White	5	6	4	1EVS26
Business 200	200 x 200	190 x 119	16:10	Matt White	5	77	4	1EVS56
Business 240	240 x 200	230 x 144	16:10	Matt White	5	52	4	1EVS57
Business 280	280 x 200	270 x 169	16:10	Matt White	5	27	4	1EVS58

Wall |



- white metal casing
- ideal for ceiling or wall mounting
- lower bar made of hard material protecting surface from creasing
- aspect ratio 1:1, 4:3 (SVGA/XGA), 16:9 (Full HD), 16:10 (WXGA) (manual adjustment)
- pull-up safety catch
- lower bar height adjustable
- high quality Matt White projection surface
- gain factor 1.0

	dimensions (cm)	viewing area (cm)	aspect ratio	projection surface	black frames (cm)	black top (cm)	black bottom (cm)	product code
Wall 175	175 x 175	175 x 175	1:1	Matt White	-	-	-	1EVS03
Wall 200	200 x 200	200 x 200	1:1	Matt White	-	-	-	1EVS04

Tripod PRO | Standard



- black metal casing
- ergonomic carriage and height adjustment handle
- portable, lightweight folding tripod easily kept in vertical position
- keystone effect eliminated by special arm that adjusts screen angle
- strong plastic leg end caps
- aspect ratio 1:1, 4:3 (SVGA/XGA), 16:9 (Full HD), 16:10 (WXGA) (manual adjustment)
- high quality Matt White projection surface
- gain factor 1.0
- black frames increase perceived contrast ratio (Tripod PRO)
- strengthened tripod construction for extreme stability (Tripod PRO)

Screen cover

- suits all types of portable projection screens
- dimension 20 x 20 cm with two available lengths - 195 cm and 215 cm

Product code: 195 cm – 1EVA01, 215 cm – 1EVA02

	dimensions (cm)	viewing area (cm)	aspect ratio	projection surface	black frames (cm)	black top (cm)	black bottom (cm)	product code
Tripod PRO 180	180 x 180	175 x 175	1:1	Matt White	2.5	2.5	2.5	1EVT13
Tripod PRO 200	200 x 200	195 x 195	1:1	Matt White	2.5	2.5	2.5	1EVT14
Tripod Standard 150	150 x 150	150 x 150	1:1	Matt White	-	-	-	1EVT02
Tripod Standard 175	175 x 175	175 x 175	1:1	Matt White	-	-	-	1EVT03
Tripod Standard 200	200 x 200	200 x 200	1:1	Matt White	-	-	-	1EVT04

Video | Cinema



- black aluminium casing
- portable, lightweight, easy storage casing
- manual height adjustment
- stable screen base
- aspect ratio 4:3 (Video Floor), 16:9 (Cinema Floor)
- high quality Matt White projection surface
- gain factor 1.0
- black frames increase perceived contrast ratio
- black screen bottom - screen can be positioned at viewer's eye level

	dimensions (cm)	viewing area (cm)	aspect ratio	projection surface	black frames (cm)	black top (cm)	black bottom (cm)	product code
Video Floor 130	128 x 199	122 x 91.5	4:3	Matt White	3	3	104.5	1EVP01
Video Floor 170	168.5 x 199	162.5 x 122	4:3	Matt White	3	3	74	1EVP02
Cinema Floor 140	138.5 x 199	132.5 x 74.5	16:9	Matt White	3	3	121.5	1EVP11
Cinema Floor 180	183 x 199	177 x 99.5	16:9	Matt White	3	3	96.5	1EVP12

portable

portable screens

Fold



surface fixed to frame by metal press studs



assembly is quick and easy



height adjustment



- stable, silver aluminium foldable frame
- ideal for large-scale projections, both indoors and outdoors
- quick and simple assembly (no tools needed)
- surface fixed to frame with metal press studs
- aspect ratio 4:3 (SVGA/ XGA), 16:9 (Full HD)
- black frames increase perceived contrast ratio
- convenient, black case on castor wheels for easy transportation and carriage
- height adjustment
- front projection is standard accessory
- optional rear projection surface

	dimensions (cm)	viewing area (cm)	aspect ratio	projection surface	black frames (cm)	black top (cm)	black bottom (cm)	case dimensions (cm)	product code
Fold 240 (4:3)	263.8 x 202.9	243.8 x 182.9	4:3	Matt White	10	10	10	99 x 31 x 54	1EVF11
Fold 300 (4:3)	324.8 x 248.6	304.8 x 228.6	4:3	Matt White	10	10	10	119 x 31 x 60	1EVF12
Fold 360 (4:3)	385.8 x 294.3	365.8 x 274.3	4:3	Matt White	10	10	10	119 x 31 x 66	1EVF13
Fold 400 (4:3)	426.4 x 324.8	406.4 x 304.8	4:3	Matt White	10	10	10	119 x 31 x 66	1EVF14
Fold 500 (4:3)	528 x 401	508 x 381	4:3	Matt White	10	10	10	36 x 152.5 x 36 (frame) 36 x 152.5 x 60.5 (legs, screen)	1EVF15
Fold 180 (16:9)	219.2 x 130.3	203.2 x 114.3	16:9	Matt White	8	8	8	93 x 31 x 45	1EVF16
Fold 220 (16:9)	263.8 x 157	243.8 x 137.2	16:9	Matt White	10	10	10	99 x 31 x 54	1EVF17
Fold 280 (16:9)	324.8 x 193	304.8 x 172.7	16:9	Matt White	10	10	10	119 x 31 x 60	1EVF18
Fold 340 (16:9)	385.8 x 226	365.8 x 205.7	16:9	Matt White	10	10	10	119 x 31 x 66	1EVF19
Fold 380 (16:9)	426.4 x 249	406.4 x 228.6	16:9	Matt White	10	10	10	119 x 31 x 66	1EVF20



mounting systems

brackets

IWB Wall electric |



perspective view



- wall mounted bracket for Interactive Whiteboards (IWB)
- smooth, electrical height adjustment in 45 cm range (+/-22.5 cm from central position)
- universal short-throw projector arm included
- accepted IWB heights: 100 - 150 cm
- unlimited IWB width
- accepted IWB depths: 3.3 - 7.1 cm
- IWB position to the bracket can be adjusted with 3.2 cm pitch
- maximum load: 40kg (IWB)
- maximum projector weight: 10 kg
- projector arm adjusts in the range of 37 cm - 57.5 cm (ultra short-throw) and 70 cm - 120 cm (short-throw)

product code: 1MV022



smooth, electrical height adjustment



side speaker mounting brackets (optional)

PST1200 | PST575



- projector arm length: 370 - 575 mm (PST575), 700 - 1200 mm (PST1200)
- swivel 360°
- maximum projector weight - 10 kg
- ball joint allowing smooth tilt regulation +/- 25°
- precise regulation of the projector position with threaded distancing tubes
- cable with connector can be hidden inside the mount
- maximum spacing between projector assembly holes - 38 cm

product code: PST1200 - 1MVWM6, PST575 - 1MVWM5

AST1200



- projector arm length: 63.5 - 116.5 cm
- tilt +/- 42°, side tilt +/- 42°
- maximum projector weight: 12 kg
- maximum spacing between projector assembly holes: 30 cm
- cable with connector can be hidden inside the mount
- additional steel wire rope for installation on weak walls

product code: 1MVWM4

ST1200



- fixed projector arm (120 cm), projection distance: up to 114cm
- tilt +/- 15°, side tilt +/- 22.5°
- maximum projector weight: 25 kg
- maximum spacing between projector assembly holes: 34 cm
- additional steel wire rope for installation on weak walls

product code: 1MVWM3

EasyMount



- can be mounted directly or adjusted in range of 43 - 65 cm
- tilt +/- 22.5°, swivel +/- 15°
- maximum projector weight - 10 kg
- maximum spacing between projector assembly holes - 32 cm
- cable without connector can be pulled through the mount tube

product code: 1MVEM2

ProMount Direct + extension



- direct ceiling mounting
- total mount length 20 cm
- swivel 360°
- maximum projector weight: 10 kg
- ball joint allowing smooth tilt regulation +/- 25°
- precise regulation of the projector position with threaded distancing tubes
- maximum spacing between projector assembly holes - 38 cm

product code: 1MVPM5



- extension for Avtek ProMount Direct
- 3 telescopic tubes
- length 34 - 102 cm
- length regulation pitch 5 cm
- cable with connector can be pulled through the mount tube

product code: 1MVPM6

mounts

Flatpanel Mount W60F01



- max. screen weight: 60 kg
- distance from the wall 1.5 cm
- weight 1.8 kg
- VESA standard (mm): up to 600 x 400
- black
- magnetic spirit level included

product code: 1MVF01

Flatpanel Mount W35F01



- max. screen weight: 35 kg
- distance from the wall 1.8 cm
- weight 0.8 kg
- VESA standards (mm): up to 200 x 200
- black


product code: 1MVF02

Flatpanel Mount W25M01



- max. screen weight: 25 kg
- swivel 180°
- tilt +10° / -15°
- distance from the wall min. 10.2, max. 35.5 cm
- weight 2.6 kg
- VESA standards (mm): up to 200 x 200
- black

product code: 1MVF03

A close-up, low-angle photograph of a black, textured fabric bag. The focus is on a silver metal zipper pull and a silver metal carabiner hook attached to the bag. The bag's surface has a fine, woven texture. In the lower right corner, the brand name "avtek" is printed in a light, lowercase font. The lighting is dramatic, highlighting the metallic sheen of the zipper and carabiner against the dark fabric.

accessories

accessories

speakers & cables

Speaker Pro



- perfect for small and medium classrooms and conference rooms
- set of two, active 3-way speakers with built in amplifier
- max. output power 2 x 30W RMS
- power input 230V, 50Hz
- frequency response: 35Hz - 20KHz
- separation: <55dB
- input impedance 50K Ω
- 2 x 3.5 mm mini-jack inputs
- volume control and input selection on the front panel
- built-in connectors ideal for installations with projector and PC
 - VGA in/out for computer signal
 - RJ45 in/out for network and internet
 - USB in/out for interactive whiteboard
- dimensions: 660 x 140 x 100 mm (1 speaker)
- easy installation with slide-in bracket
- accessories: power cord, 5 m speaker cable, 1.5 m mini-jack cable
- weight 8 kg (set of 2 speakers)
- color: dark grey

product code: 1SVS02

Speaker



- perfect for small classrooms and conference rooms
- set of two, passive 2-way speakers
- max. output power 2 x 20W
- frequency response: 80Hz - 20KHz
- impedance 4 Ω
- dimensions: 233 x 167 x 138 mm (1 speaker)
- accessories: mounting set
- weight 4 kg (set of 2 speakers)
- color: black

product code: 1SVS01

VGA Cables



- VGA cable with D-Sub15 connectors
- wire gauge 3 x 28 AWG (RGB coaxial) + 5 x 24 AWG
- transmission of full RGB signal (RGBHV + control pins)
- ferrite ring reducing signal noise
- working voltage 30 V
- 3 lengths available 5 m, 10 m or 15 m
- color: white

product code: 5 m - 1KV001, 10 m - 1KV002, 15 m - 1KV003

Presenter Remote



button assignment

laser

page up

page down

hide screen

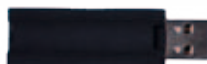
retractable USB receiver



- 2-in-1 wireless presenter and USB microSD card reader
- indispensable tool for all mobile presenters (PPT, pictures and other files can be saved on microSD card and stored inside the remote)
- built-in, retractable USB receiver
- microSD card reader integrated in USB Receiver
- MS Power Point wireless presentation control:
 - page up
 - page down
 - hide screen
- RF 2.4 GHz technology provides up to 10 m range
- red laser pointer (Class II) with 200 m range
- Plug&Play compatibility with MS Windows, Mac and Linux (no driver required)
- powered with 1 AAA battery (included)

product code: 1EVA07

USB receiver with built-in microSD card reader



1 microSD card (optional)

2 USB receiver

3 Remote

Bag +



- universal projector bag
- holds any projector of size up to 270 x 110 x 350 mm
- additional, small pocket for remote control inside
- 2 velcro bars for space organisation and content protection
- protective 10 mm foam
- external pocket for cables & accessories (290 x 260 mm)
- comfortable carry handle and removable arm belt
- made of durable PVC600D nylon

product code: 1AV002



small pocket for accessories



2 velcro bars inside



external pocket

notes

notes

avtek.eu



F.A.T., s.r.o.
Partizánska cesta 53
974 01 Banská Bystrica

www.fat.sk
+421 908 438 599
obchod@fat.sk

Present | Teach | Inspire